

KU Center for East Asian Studies NewsNotes

University of Kansas
1440 Jayhawk Blvd., #202, Lawrence, KS 66045
Tel: (785) 864-3849
ceas@ku.edu
www.ceas.ku.edu
East Asian Library: www2.lib.ku.edu/eastasia/

Volume 14 Number 2
November 15, 2005

Inside: Upcoming Events: p. 2; New Faculty Profiles: p.3

Hair Power: Unusual Depiction of Hair through Drawing



Hong Zhang, an artist from China and wife of CEAS faculty member John Kennedy, exhibited drawings revolving around the imagery of hair from September 19 to October 28, 2005 at Kansas Union gallery, level 4. The exhibition was appreciated by people from different cultures and all walks of life.

Hong exhibited one large charcoal drawing “Twin Spirits” #1 and twelve smaller graphite drawings. “Twin Spirits” #1 is a self-portrait of Hong and her twin sister; both had long hair since high school. “It has become a part of our identities as individuals and as twins. I use long hair to exaggerate our major characteristics.” Hong said. The peculiarity of the drawing is that the images seem identical from a distance, but as you get closer, subtle

variations are noticeable. The choice of black and white colors reflects the Chinese philosophy of Yin and Yang: contrasting and opposing values, which are intertwined and inseparable. The drawing also reflects the idea of Chinese Door-gods, which are traditionally hung in pairs and ward off evil spirits.

Talking about the imagery of hair, Hong explained, “According to Eastern culture, a young woman’s long hair is associated with life force, sexual energy, growth, and identity.”

Her graphite hair drawings depict humor, beauty and repulsion. According to Hong, long hair not only looks beautiful, but some times it can be very repulsive in particular settings; as depicted in her pictures of hair in a hamburger, an egg, a wineglass, a toothpaste, a cigarette, and a sink. She combines hair and everyday objects to exaggerate the two different visual impacts of hair through a surrealist approach. Her body of work on hair is a shift from a personal to a broader perspective.



Hong Zhang was born in China and moved to Lawrence in July 2004. She received her MFA from the University of California, Davis in 2004, MA from California State University Sacramento in 2002 and BFA from Beijing Central Academy of Fine Arts. Hong attended a prestigious artist residency program at Skowhegan School of Painting and Sculpture. She was also a recipient of Dedalus Foundation MFA fellowship in 2004. She has exhibited her work in California, Chicago, New York, Portland, Hong Kong, Taiwan, South Korea, and China.

MARK YOUR CALENDAR

KU International Education Week is on

KU is taking part in International Education Week, which started on Monday, November 14 and will continue till Friday, November 18. International Education Week is an opportunity to celebrate the benefits of international education and exchange worldwide. This joint initiative of the U.S. Department of State and the U.S. Department of Education is part of their effort to promote programs that prepare Americans for a global environment and attract future leaders from abroad to study, learn, and exchange experiences in the United States.

KU has also organized several events as part of the International Education Week. There are lectures, workshops, panel discussion and a film, as well. KU libraries have organized an open house on Wednesday, November 16 from 11:30 a.m. to 2:00 p.m. at Watson Library, 3rd floor Reading Room.

The film, *'Sushi'* will be presented on **Thursday, November 17**. Produced by Films for the Humanities and Social Sciences in 2005, as a part of the "Asian Masters" series, the film focuses on Japanese aestheticism on sushi. Dr. Eric Rath, an expert on Japanese food culture will lead a discussion regarding the role of sushi in Japanese culture from 12:00 noon to 1:30 p.m. at Watson Library, in the Clark Instruction Center.

On the same day, Alison Miller, an Asian art intern, will lead a tour of the exhibition, **"The Sacred & the Secular: Buddhist Imagery in Religious & Popular Contexts"** at 2:00 p.m. at the Spencer Museum of Art, the Asian Gallery. The exhibition is organized by Hillary Pedersen, last year's intern in Asian art and a KU doctoral candidate in art history. The exhibition aims to illustrate how Buddhism is manifested in Asian Art.

Also, on **Thursday, November 17**, the Center for East Asian Studies will sponsor a discussion, **"From Kansas to East Asia: Highlights of the 2005 Kansas Asia Scholars Program"**. The discussion will be held at 4:00 pm at Ecumenical Christian Ministries.

There are several events that have been scheduled. For complete KU International Education Week events listing, visit <http://www.lib.ku.edu/eastasia/IEW>

Larawan: A Portrait of the Philippines Through Dance & Music

The Filipino Association of Greater Kansas City and the Filipino Cultural Center Foundation will present **"Larawan: A Portrait of the Philippines Through Dance & Music."** The Sinag-Tala Performing Arts Troupe in concert will be held on **Saturday, November 19** at 7:00 p.m. at the Folly Theater (www.follytheater.com), 12th & Central, Kansas City, MO. For more information on the concert call 913-381-1601 or visit www.sinag-tala.org/concert.

Wine and Cheese Lecture Series

As part of the Center for East Asian Studies' Wine and Cheese Lecture Series, Greg B. Simpson, Professor of Cognitive Psychology, and Department Chair, will be giving a lecture entitled **"Korean: The Crown Jewel of Alphabets."** This event will be held at the Ecumenical Christian Ministries, 1204 Oread from 4:00 p.m. to 5:00 p.m. on **Thursday, December 8, 2005**. The event is free and open to the public.

New Faculty Profiles

Woochan Shim

Woochan Shim has recently joined KU as an Assistant Professor in the department of Social Welfare. Dr. Shim has done PhD in Social Work from the University of Illinois at Urbana Champaign and Master of Science in Social Work from Columbia University. She received her Bachelor of Arts in Social Work from Catholic University, Korea. Dr. Shim has previously taught at the University of Wisconsin-Oshkosh and the University of Illinois at Urbana Champaign.



Her research interests include domestic violence victims in the child welfare system, spirituality and domestic violence, and ‘kiroki families’-split families with one parent residing in Korea and the rest of the family in America.

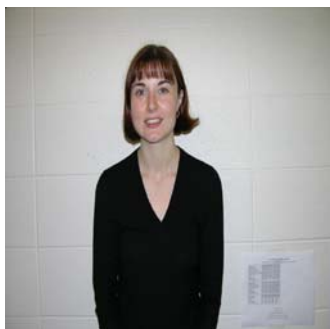
She has a number of refereed and non-refereed publications and conference presentations to her credit. She has been awarded several grants for research on domestic violence.

Her professional experience ranges wide beyond teaching and research. She has worked as an Internet Cyber Counselor; counselor and program director for the Korean-American Family Service Center; Consultant for Asia and Pacific Islander Coalition on HIV/AIDS; and English tutor. She also teaches Korean at the Kansas Union.

Dr. Shim was ranked as Excellent Teacher by the students of the University of Illinois at Urbana Champaign for three consecutive semesters. She graduated *Suma cum Laude* from Catholic University, Korea, and received a scholarship from International Soroptimist, Korea. She has also participated and won prizes in elocution and drama. She has made several radio appearances in New York for community education on domestic violence prevention in Korean community.

Dr. Shim enjoys horse back riding, teaching Korean and learning the Japanese martial art ‘kendo.’

Alison Gabriele



Alison Gabriele is a new Assistant Professor in the Department of Linguistics at KU. She joined KU in fall 2005. Dr. Gabriele completed her BA in English Literature and Rhetoric with a minor in Spanish at Binghamton University, SUNY. She completed her PhD in Linguistics in 2005 at the Graduate Center of the City University of New York. Her dissertation, “The Acquisition of Aspect in a Second Language: a Bidirectional Study of Learners of Japanese and English” was funded by the National Science Foundation and focused on how learners of English and Japanese acquire semantics in a second language.

Dr. Gabriele worked as an Assistant English Language Teacher at the elementary and junior high school level in Japan between 2000 and 2001, under the Japan Exchange and Teaching Program. Her experience working with native Japanese speakers learning English played an important role in determining her dissertation research topic. She has worked on a number of research projects related to learning and using first and second languages and has many publications to her credit.

Before coming to KU, Dr. Gabriele taught at Queens College, CUNY. During her undergraduate and graduate studies, she was awarded several honors for academic excellence, including the Mario Capelloni dissertation fellowship at the Graduate Center, CUNY and membership in the Phi Beta Kappa Honor Society.

In her free time, she loves traveling and cooking.

The Japan Teaching Exchange Program

Every year, the Japanese government invites young college and university graduates from overseas to participate in the Japan Exchange and Teaching (JET) Program throughout Japan. Established in 1987, the program has earned a high reputation, both in Japan and around the world, for its efforts in human and cultural exchanges; and has become one of the largest cultural exchange programs across the globe.

Sponsored by the Japanese government, the JET program offers participants the opportunity to engage in intercultural exchange through teaching the English language in the Japanese public education system or by working for a local Japanese government. Some of the benefits of the program include an allowance of ¥3.6 million per year (around \$33,000, depending on the exchange rate) tax free, round-trip airfare, health benefits, good vacation and travel opportunities, and an international alumni network- the JET Alumni Association (JETAA).

The required qualifications are a Bachelor's degree in any field as of July 1 of the departure year and U.S. citizenship. No teaching experience or Japanese ability necessary.

The applications are available online and the application deadline is November 29, 2005. Applications are available at www.us.emb-japan.go.jp/JET%20program/homepage.htm.

For details, contact: Japan Information Center, 737 North Michigan Avenue, Suite 1000, Chicago, Illinois 60611; call 312-280-0434; or email: jicmext@webkddi.com. Interviews will take place in Kansas City.